



NEXT GENERATION CONTRACTORS

Hi-rail Crane Truck 8 Wheel-18 Tonne Metre

Truck Model: Scania p400

Colour: White

Configuration: 8 wheels (road) & standard gauge hi-rail wheels

Shape: Tabletop with rear mount crane

Tray Length: 7.2m

Carry Capacity: 9.5 Tonne

Crane Model: HMF 1820 k4 evs



Key Features



Crane

18 Tonne meter crane
Rear Mounted Crane with a 12.3m reach
Lifts 3.4T at 4.5m
Lifts 1.1T at 12.7m



EVS Stability

EVS provides full capacity, right to the limit of its highest lift positions, ensuring constant stability of the vehicle.



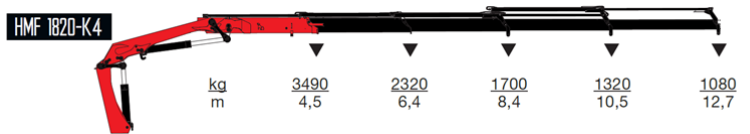
Cable Guidance System

Cable guidance system is available for accurate, hi-rail, overhead cable running.

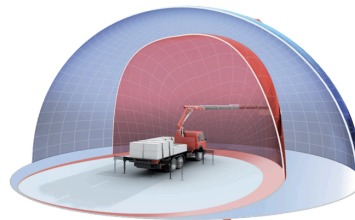


Location Tracking

Accurate vehicle location tracking provides delivery security and environmental impact monitoring.



The HMF Patented EVS system carries out active monitoring of vehicle stability in the entire 360* working area around the vehicle, actively reducing rollover risk.



Max. Lifting Capacities	HMF	1820 k4
OUTREACH	CAPACITY	
4.5 m	14' 9"	3490 kg / 7690 lbs
6.4 m	21' 0"	2320 kg / 5110 lbs
8.4 m	27' 6"	1700 kg / 3740 lbs
10.5 m	34' 5"	1320 kg / 2910 lbs
12.7 m	41' 8"	1080 kg / 2380 lbs